



Starting your Placement Assessment:

First, select the “Get Started” button on the left side of the screen. Then, navigate to the bottom of the page and select the “Launch LockDown Browser” button. See page 2 to follow along with screenshots!

Respondus Monitor Startup Sequence:

1. Click **AGREE** to the Student Terms of Use.
2. Select **ALLOW**, **REMEMBER**, and **CLOSE**.
3. Adjust your webcam so it is visible in the window and click **YES**.
4. Record a short video and review to ensure audio/video were properly recorded. If satisfied, click **CONTINUE**. Otherwise click **TRY AGAIN**.
5. **N/A**
6. Take a photo using your webcam and another while holding your approved identification card to the camera. If satisfied, click **CONTINUE**. Otherwise click **TRY AGAIN**.
7. Record a video displaying the area around your computer to show the area is secure. If satisfied, click **CONTINUE**. Otherwise click **TRY AGAIN**.
8. Read (if applicable) any additional instructions provided by your instructor.
9. After completing all steps, click **BEGIN EXAM**. As you complete the assessment within LockDown Browser, Monitor records your webcam activity. You will see a Recording indicator in the top-right corner when Respondus Monitor is recording you. Once you complete the assessment, you can exit LockDown Browser to return to your session in your default internet browser.

Before Getting Started

1. Do you have the proper device?
 - Windows running 10, 8, or 7
 - Mac running OS X 10.10+
 - iPad App running iOS 9+

Note: Chromebooks are compatible.

2. Have you downloaded the LockDown browser?
https://www.aleks.com/support/lockdown_system_requirements
3. Have you confirmed that LockDown browser was installed successfully?
https://www.aleks.com/support/lockdown_test

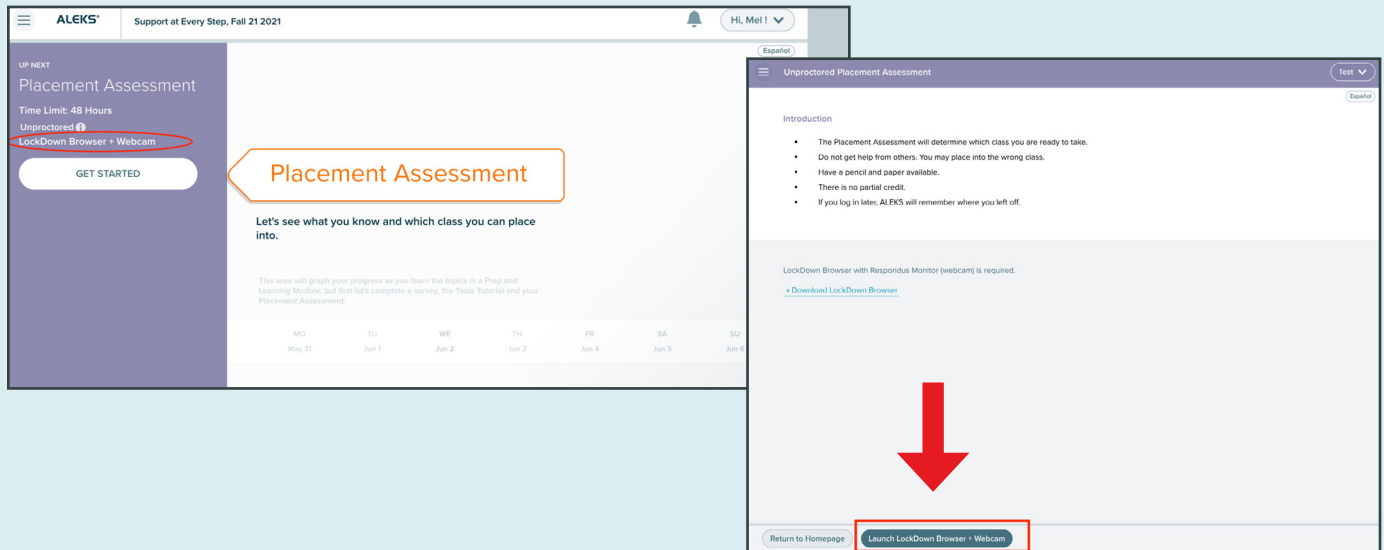
Technical Difficulties?

If you have confirmed all of the above steps, and are still having issues, it could be that your internet service is having trouble. Try plugging directly into your modem or seek out an alternative internet source.

Still stuck? Reach out to ALEKS Support for help:
www.aleks.com/contact_us

Follow Along with Screenshots:

Starting your Placement Assessment:



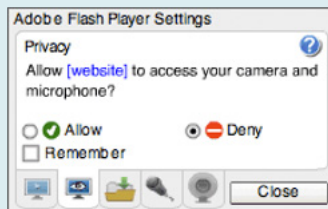
1 Agree to the student terms of use.



3 Take a photo and record a video to show your identification card, then click Continue.



2 Allow access to your camera and microphone.



4 Read any additional instructions from your instructor.

5 Finally, begin.
Good luck on your exam!